

TENUE *DE* VILLE

Hanging instruction

For hanging our wallpaper you need the following: Non-woven wallpaper paste, a bucket, a stirring staff, a sharp cutting knife, a cutting ruler, a water-level / a plumb-line, a pencil, a glue roller / a glue brush, a soft clean cloth, a sponge and a ladder.

Preparation: Only use rolls of the same batch. Before hanging verify that the wallpaper does not have any defects. For testing, roll out the wallpaper on a flat and clean underground. Check the wallpaper very accurately to prevent complaints. Claims after hanging will not be accepted.

Surface pre-treatment: The surface has to be dry, flat, clean, constant absorbent and color neutral. Old wallpapers have to be removed completely. Rough undergrounds, holes and unevenness have to be glazed and closed. For leveling the absorption and if applicable to compress the on-wall surface, use a water-based primer. Since a successful hanging result is only possible on a neutral colored underground use a rolled maculation or colored primer.

Paste: We advise to use special paste for non-woven wallpaper. The non-woven wallpaper can be applied by using the paste the wall technique (apply paste directly onto the wall and then hang the wallpaper on pasted wall, edge to edge installation) without any soaking time. The paste should be applied with a special roll and it should cover a little more than the size of the wallpaper width.

Attention: Remove any excess glue with a damp sponge immediately. Otherwise it is possible that you see traces of the glue after it dried.

Hanging the wall covering: To apply our wallpaper to the wall, you have to follow the numerical order shown on the product. Ideally start installing the wallpaper from the left side of the wall. The wallpaper should be installed vertically using a spirit Level or similar from the top to the bottom and from inside to outside inlaid. Press the wallpaper onto the wall, edge to edge installation, using a foam rubber roller a clean soft clammy cloth and remove any air bubbles.

Cut off leftover: Cut the excess wallpaper at the top and bottom of the wall, using a ruler and a cutter directly along the angle of the wall.

Caution: Please do not use brushes or any plastic rollers. The wallpaper can be damaged by solid hitting or pulling. We cannot give any warranty for form stability and damages of the material if case of using wallpaper pasting machines. Also in course of drying, overly intense heating and/or draughts seams might open up.

How do I get the wallpaper off the wall? Our wallpapers are dry-strippable if the pre-handling of the surface has been followed. Non-Woven wallpaper is not recyclable as normal paper. You can dispose old wall covering or cutting rests in your residual waste or with the "household waste similar industry drop-off".

Advice: The above mentioned indications are meant as general recommendations. No liability is assumed for conditions outside our influences such as working conditions, condition and character of the surface. In case of doubt we advise adequate self-attempts, before starting the hanging job.

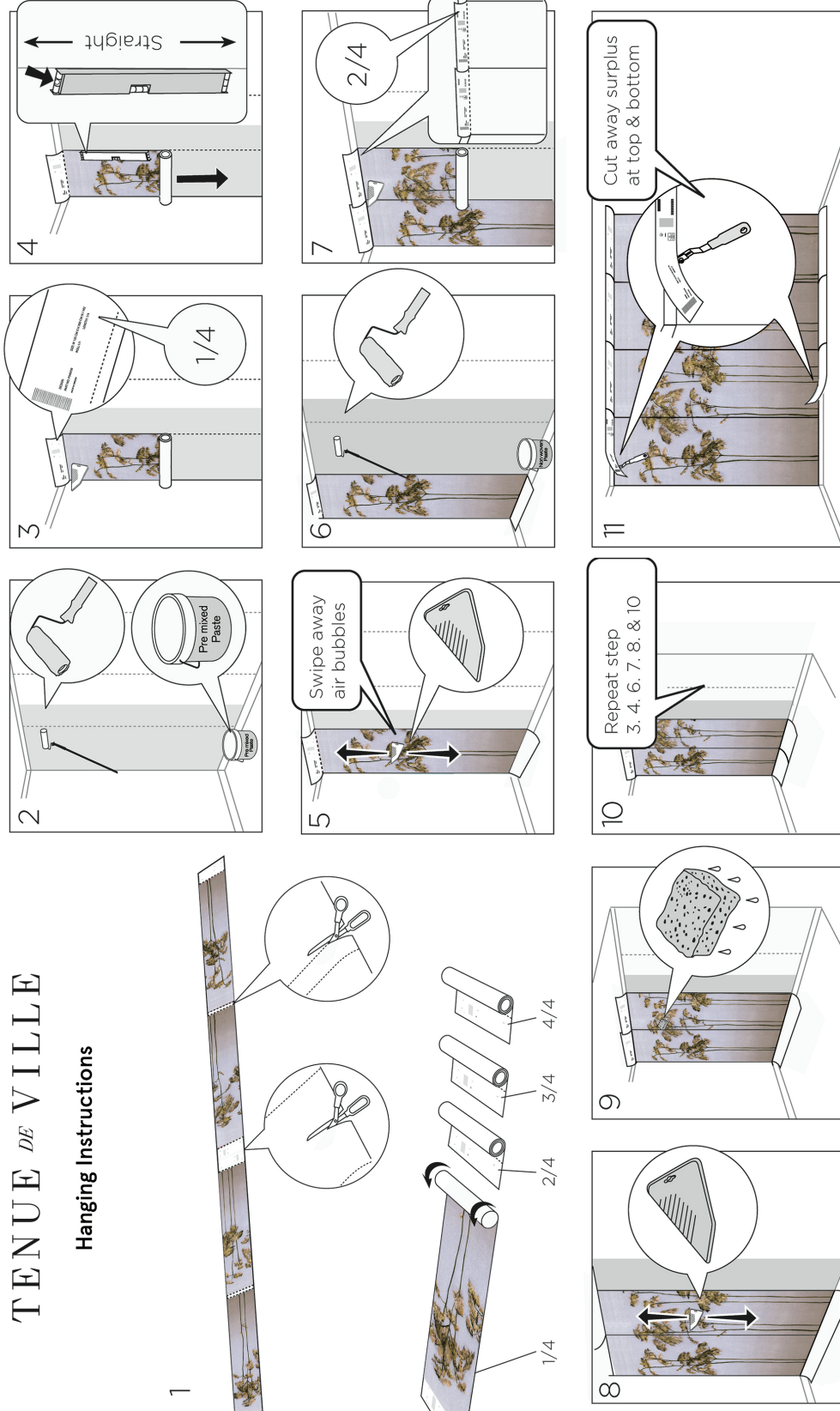
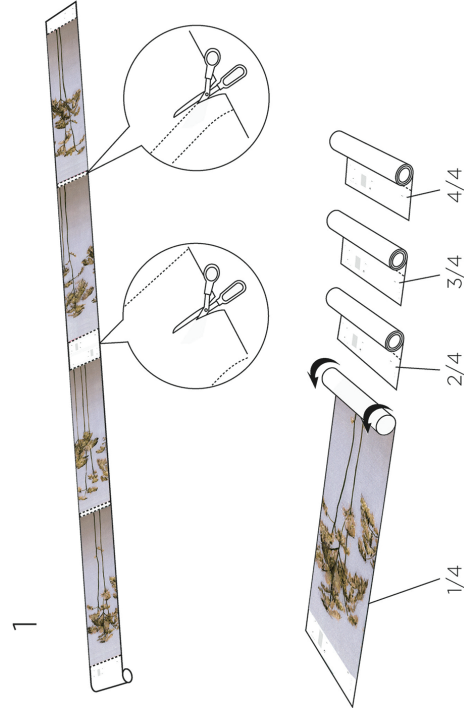
We wish you a lot of pleasure with your new wallpaper.

T_DV

contact@tenuedeville.com
tenuedeville.com

TENUE DE VILLE

Hanging Instructions



Use adapted paste for non-woven wallpaper.

Do not stretch the paper while placing. Non-woven paper will always dry back to its initial size.

Use a slightly wet sponge to gently wipe off the extra paste. Do not scrub.

Questions?

contact@tenuedeville.com

tenuedeville.com